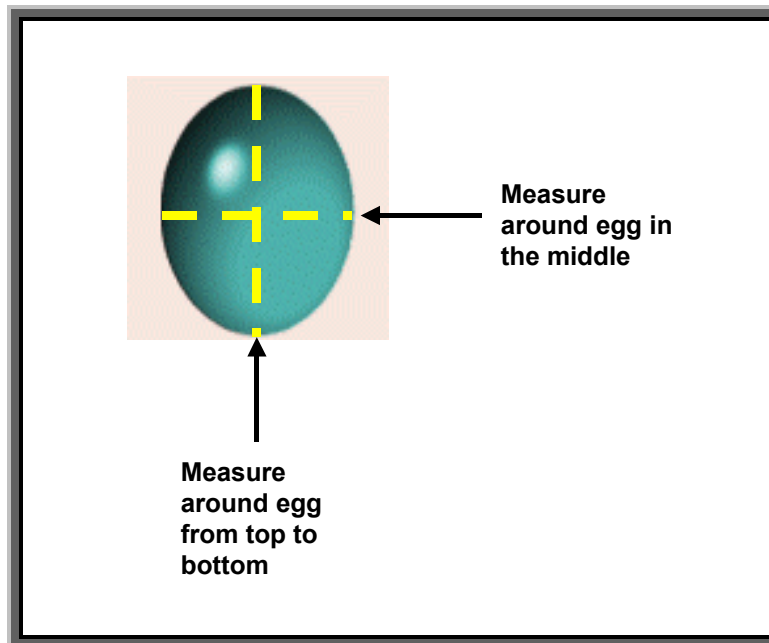


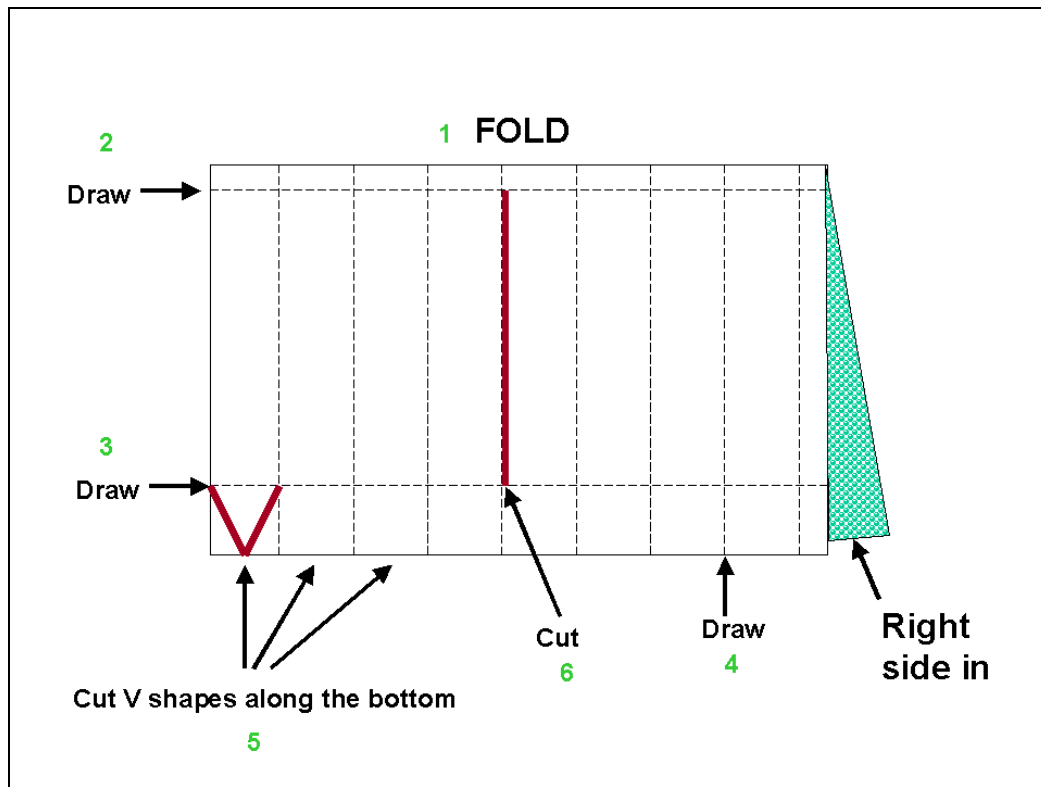
To Make Washi Eggs

- Start with a dry empty egg shell



- Measure around the egg in the middle
- Measure around the egg from top to bottom and halve that measurement
- Cut a rectangle of paper using these two measurements
- Fold the rectangle in half lengthwise with the patterned side in

- Draw a line 5mm from the fold (2)
- Draw a line 1cm from the cut edge (3)
- Draw lines vertically spaced 1cm apart (4)
- **NOTE:** Having done a dozen or so of these I am now drawing the lines 7mm apart instead of 1 cm at number 4. 1 cm works with a goose egg, 7mm is better for a hen's egg.
- Cut a V through both layers (5) all along the cut edge to the line at 3
- Cut up to the top line (near the fold) through both layers (from line 3 to line 2)



- Unfold the paper
- It should look like this



- Wrap the paper around the egg
- Glue along the middle of the egg
- Then glue down the points, one after the other, overlapping if necessary
- Varnish

And it looks like this:



Copyright Denise McDermott September 2000
3rd update February 2002
4th update February 2004