

RICE PAPER, PAINT AND GOLD LEAF BACKGROUND **UNDER GLASS**

I started with a glass plate. I glued my image down using PVA glue and waited for a couple of days to make sure the glue was dry.

Next I ripped up some rice paper (with veins) into smallish pieces to glue down.



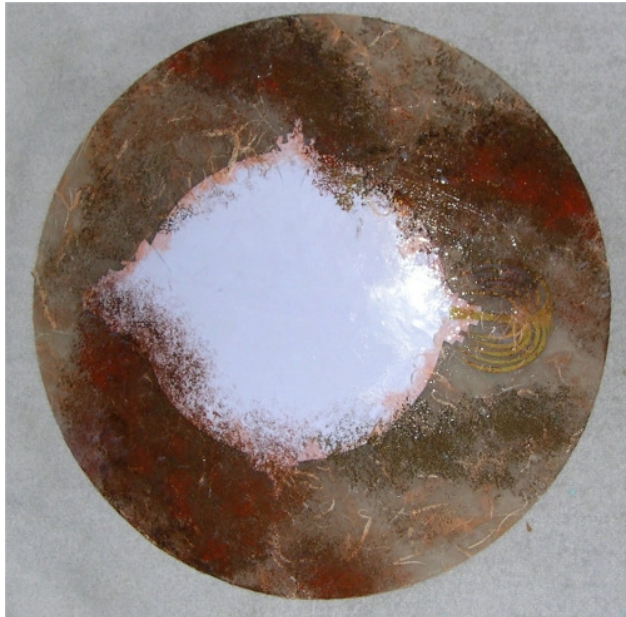
I glued them down with a brush and Liquitex Gloss medium & Varnish. You could use any sealer for this job. I overlapped the pieces a little bit. The sealer makes the rice paper semi-transparent.





I let that dry for a day.

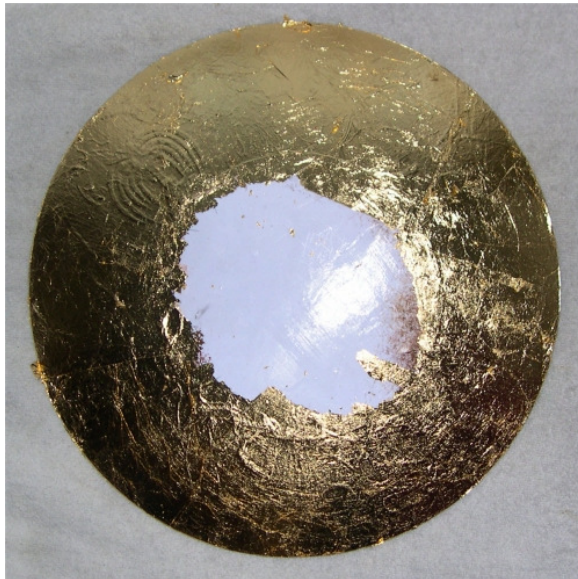
Then I assembled a couple of paint colours which were present in the picture and, using a coarse sea sponge, painted a bit of colour on the rice paper.





I let that dry. Then I applied one coat of sealer.

Time to guild. I use Langridge's Gold Size. After an hour or so, I applied the gold leaf and left it overnight.



I sealed another few times. Then I painted a coat of terracotta coloured paint. Then a darker coat of another colour.



Now I am ready to finish with gesso and sanding in the usual way.

Visit my website for more decoupage information and inspiration:

www.decoupage-online.com